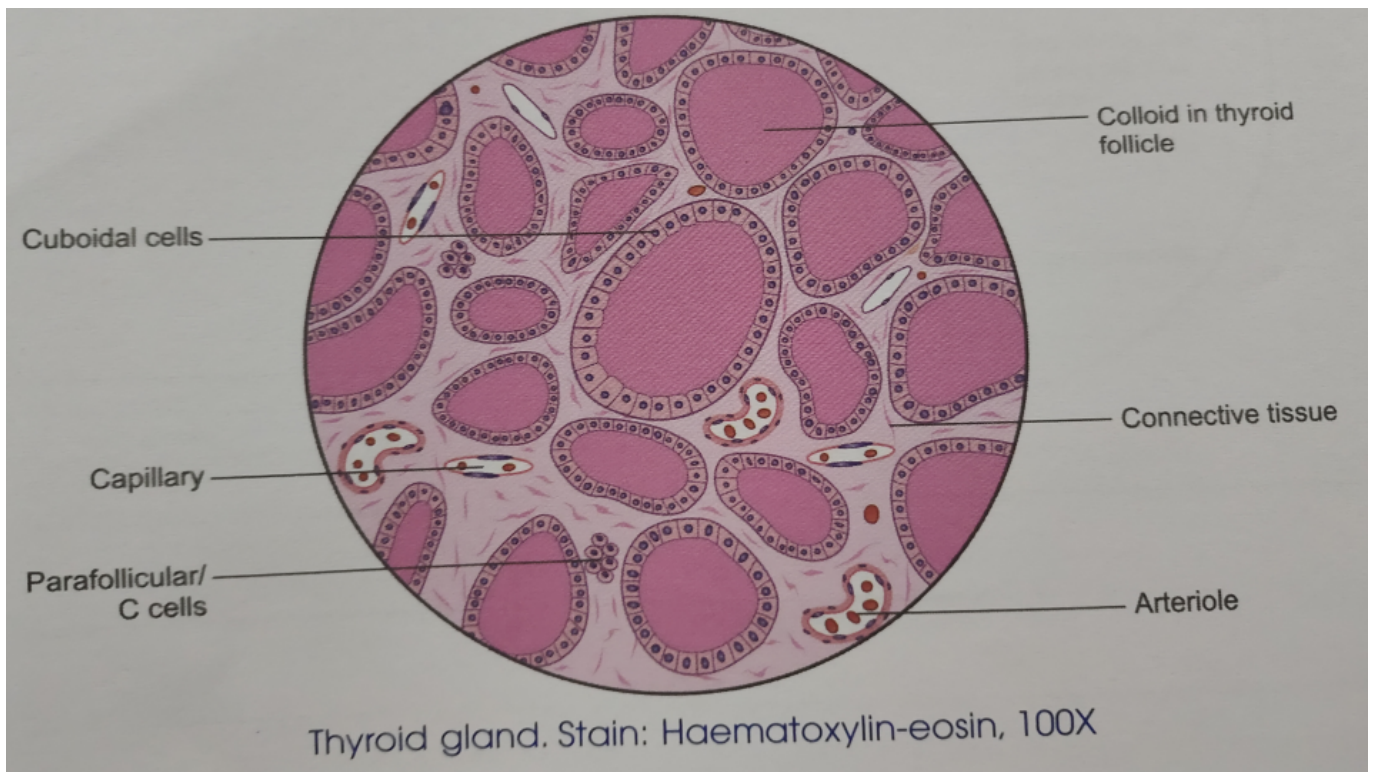
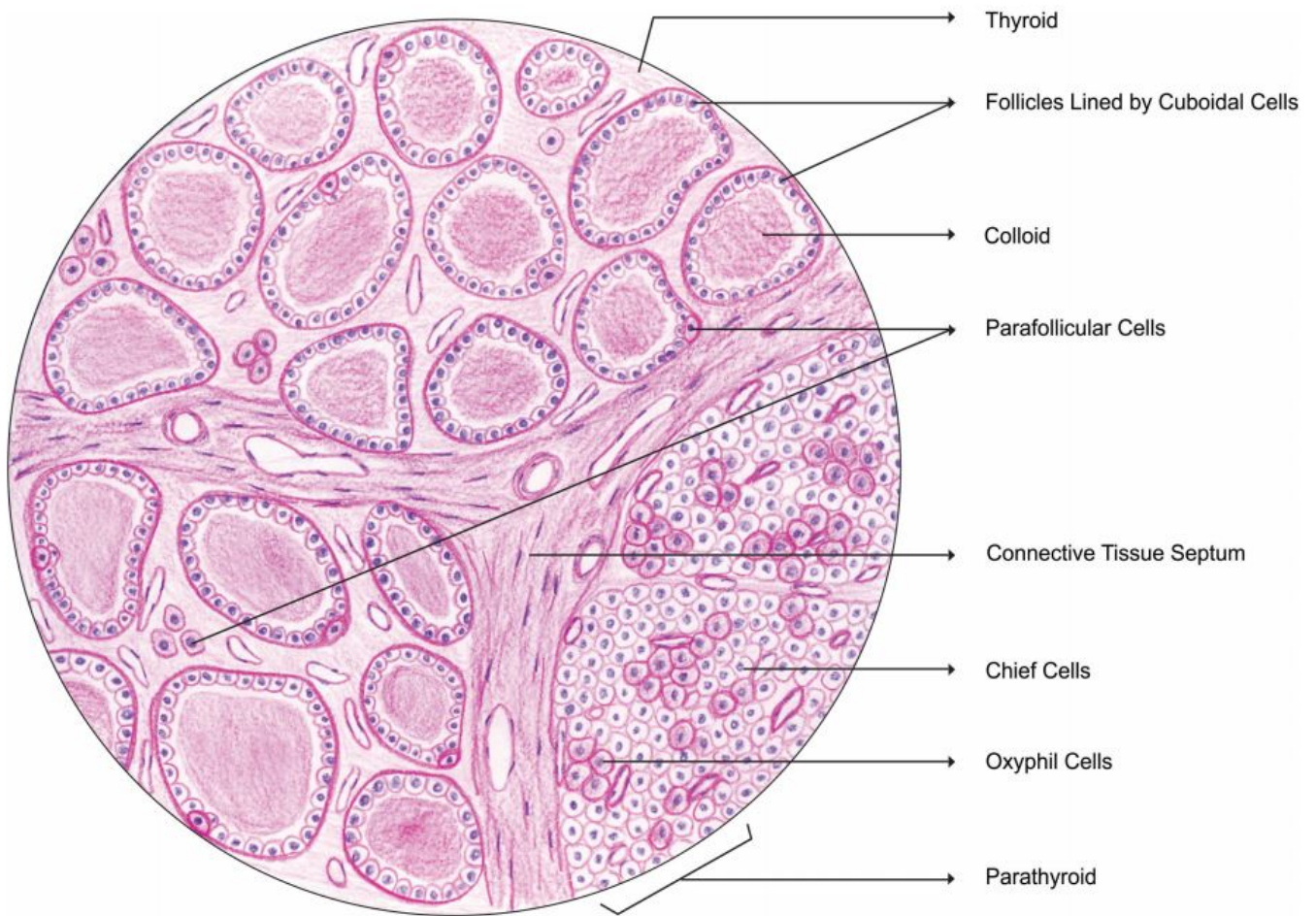


Table of Contents

THYROID GLAND 3

THYROID GLAND

- Thyroid gland
 - Synonyms
 - Shield gland , neck gland ,
 - Situation
 - C5-C7 and T1
 - embracing upper part of trachea
 - From
 - Middle of thyroid cartilage
 - To
 - Fourth tracheal ring
 - Dimensions
 - 5×2.5×2.5 cm
 - 25 grams
 - Larger in females than in males
 - Increases in size during pregnancy
 - Parts
 - Right and left lobes
 - Isthmus
 - Joins two lobes
 - Third Pyramidal lobe
 - Projects upwards from isthmus
 - Fibrous muscular band
 - Levator glandulae thyroideae
 - From body of hyoid bone to isthmus or to pyramidal lobe
 - Shape
 - Conical
 - Apex
 - Base
 - Surfaces
 - Lateral
 - Medial
 - Posterolateral
 - Borders
 - Anterior
 - Posterior
 - Capsule
 - True capsule
 - False capsule



From:

<https://mantrakshar.co.in/> - **Kshtrgyn**

Permanent link:

https://mantrakshar.co.in/doku.php/en/thyroid_gland?rev=1686986433

Last update: **2023/06/17 07:20**

