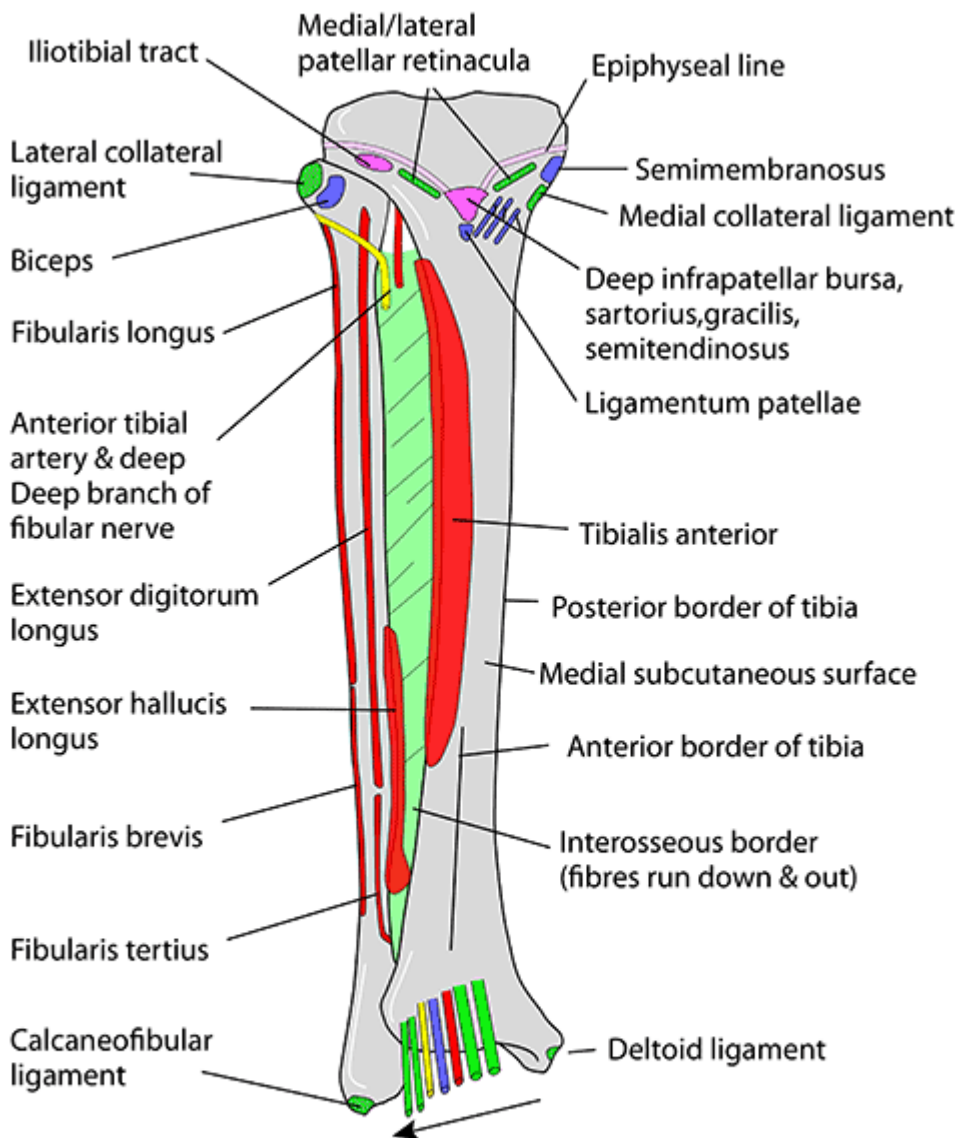


Table of Contents

TIBIA 3

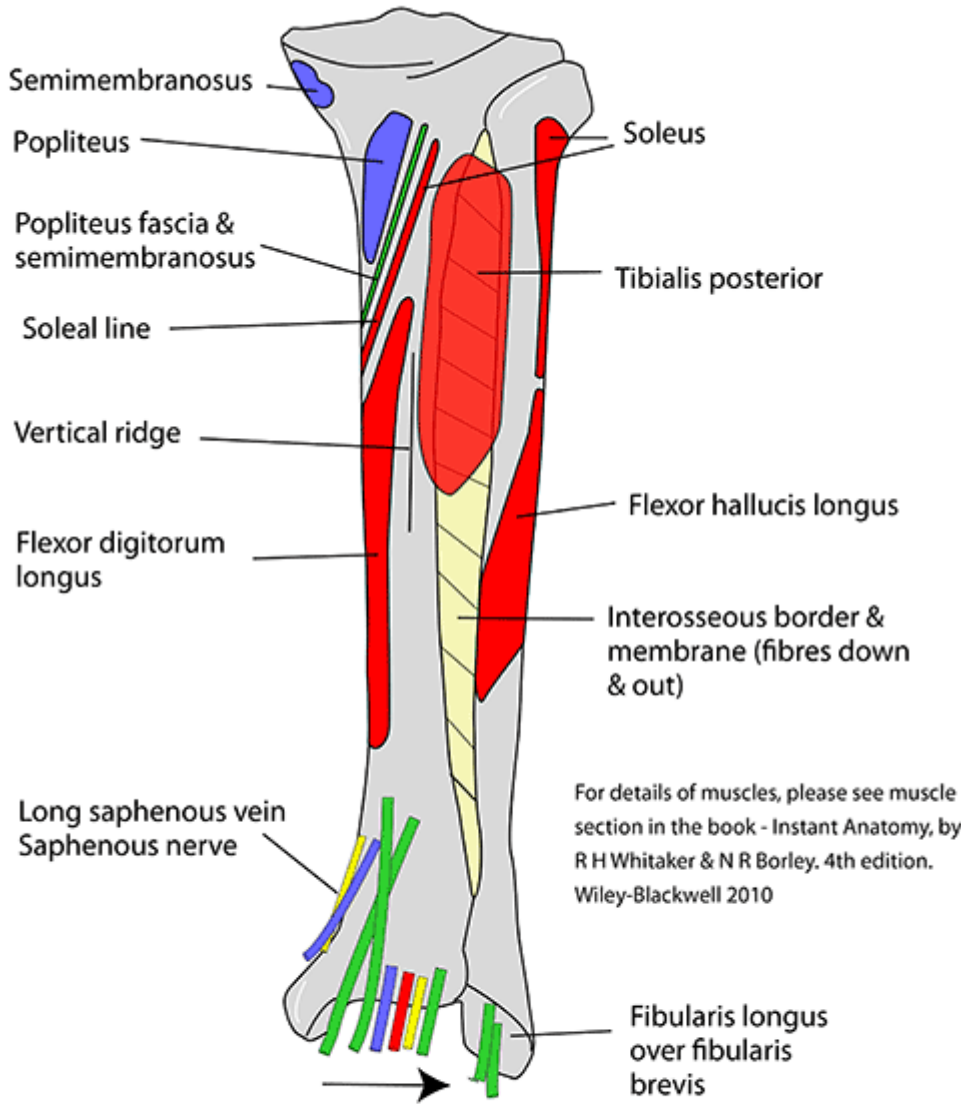
TIBIA

ANTERIOR LOWER RIGHT LEG



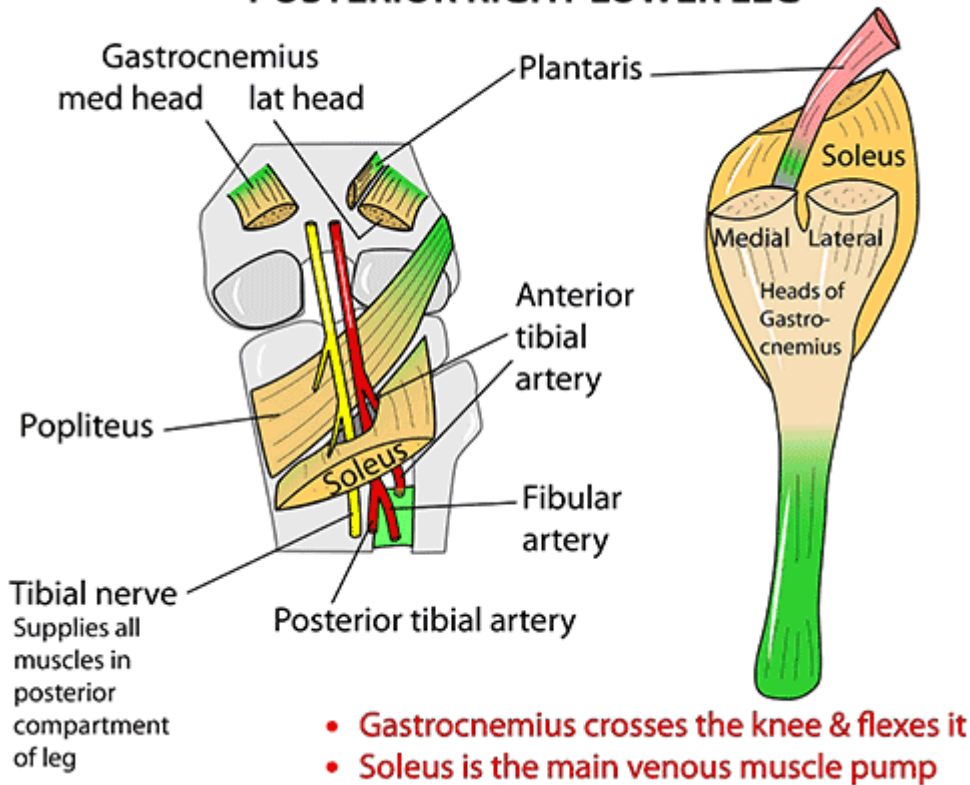
Order of structures across dorsum of foot in direction of arrow: Tibialis anterior, extensor hallucis longus, anterior tibial artery/vein, deep fibular nerve, extensor digitorum longus, fibularis tertius
 Mnemonic: Timothy Has A Very Nasty Diseased Foot

POSTERIOR LOWER RIGHT LEG

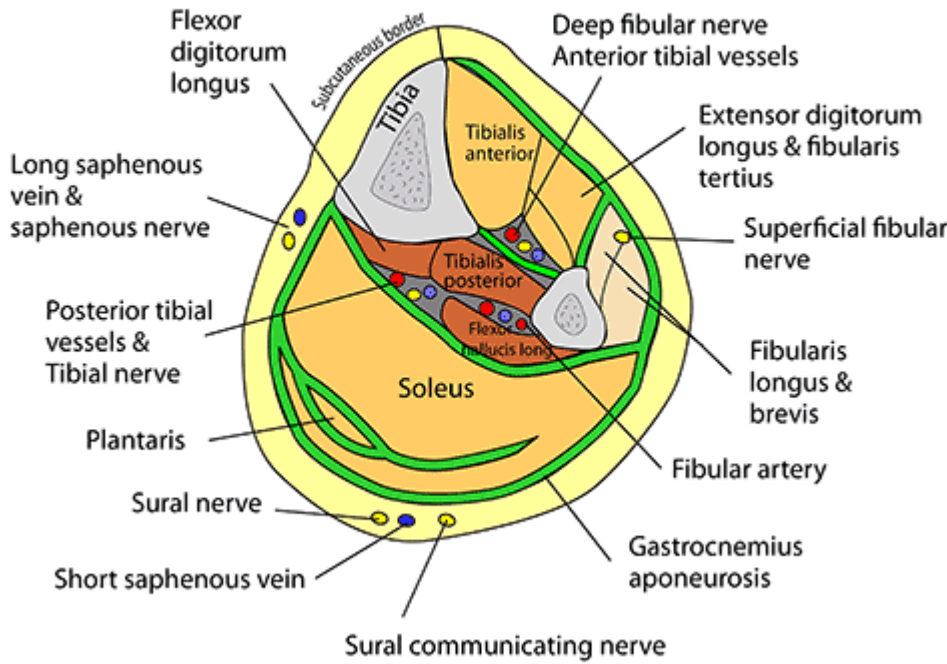


Order of structures behind medial malleolus as indicated by arrow:
 Tibialis posterior, flexor digitorum longus, posterior tibial vein & artery, tibial nerve, flexor hallucis longus
 Mnemonic: Timothy Doth Vex All Nervous Housemaids OR
 Tom Dick And A Very Nervous Harry

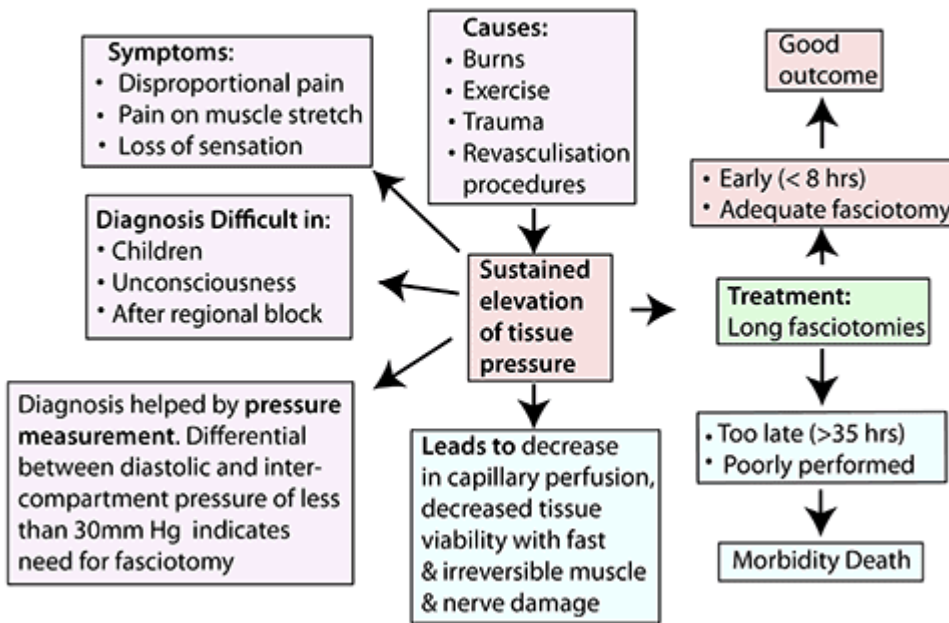
POSTERIOR RIGHT LOWER LEG



AXIAL (CROSS) SECTION LOWER LEG



COMPARTMENT SYNDROMES



From: <https://mantrakshar.co.in/> - Kshtrgyn

Permanent link: <https://mantrakshar.co.in/doku.php/en/bone/tibia>

Last update: 2022/04/01 03:12

