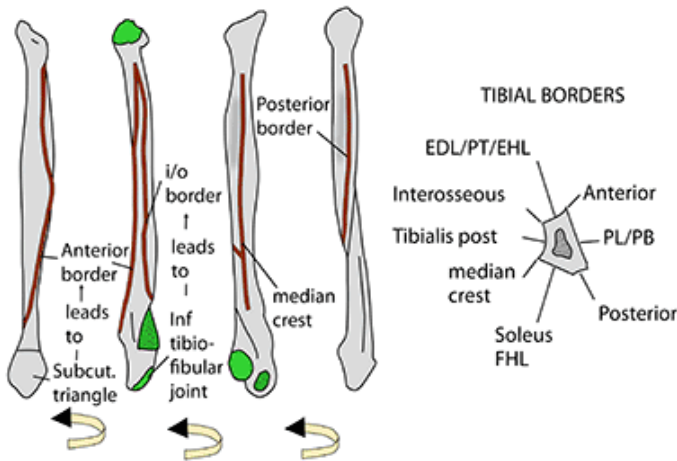
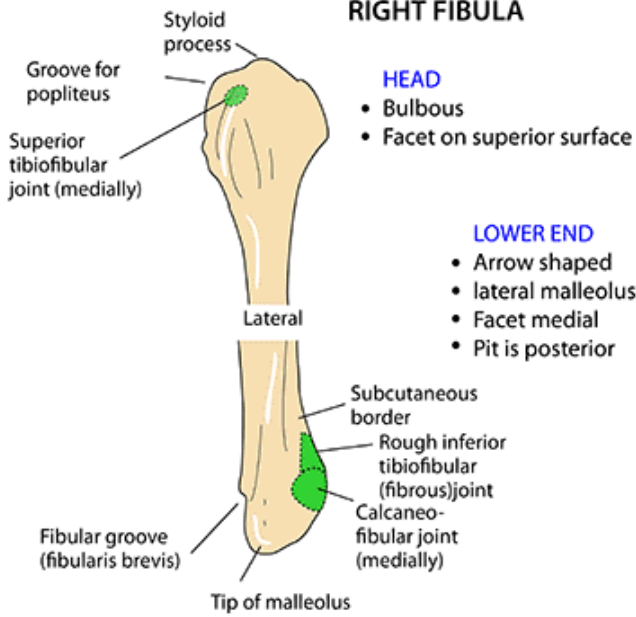


Table of Contents

FIBULA 3

FIBULA

RIGHT FIBULA

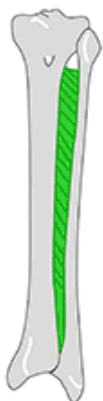


"SIDING" A FIBULA



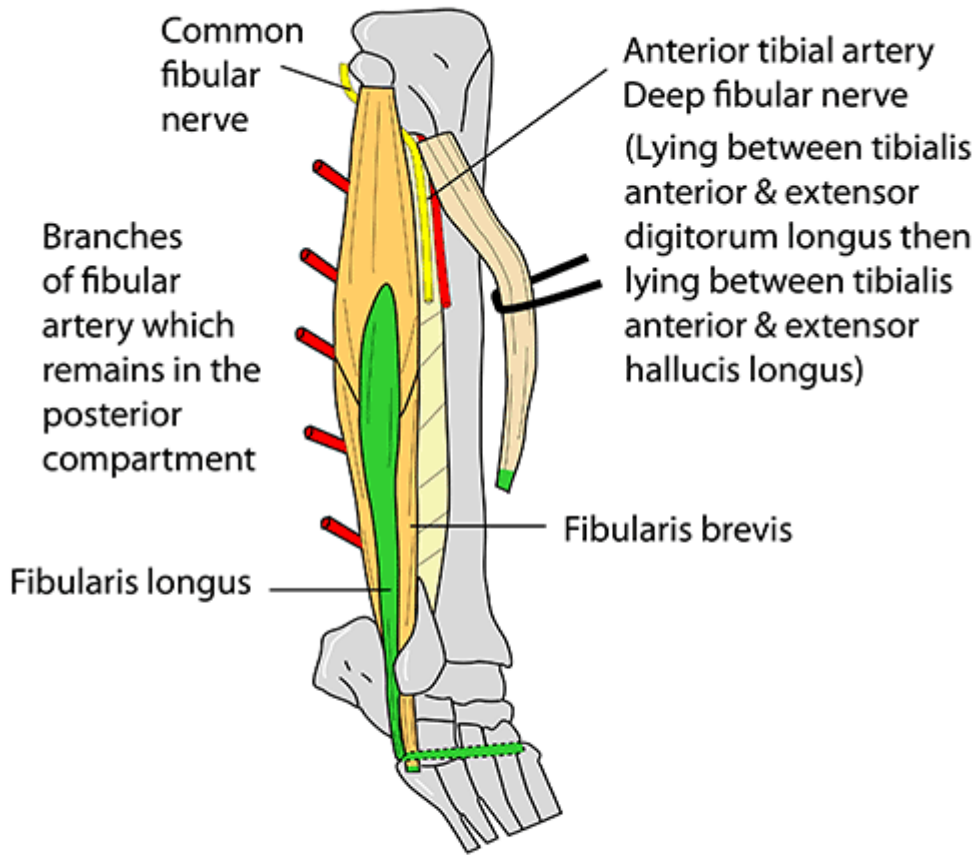
TO "SIDE" A FIBULA
 Hold the lower end of the fibula with the pulp of your thumb sitting comfortably in the pit. If it fits easily then the fibula is the same side as your hand. In this case it is a right fibula. If it is not a comfortable fit then it belongs to the opposite side.

INTEROSSEOUS MEMBRANES



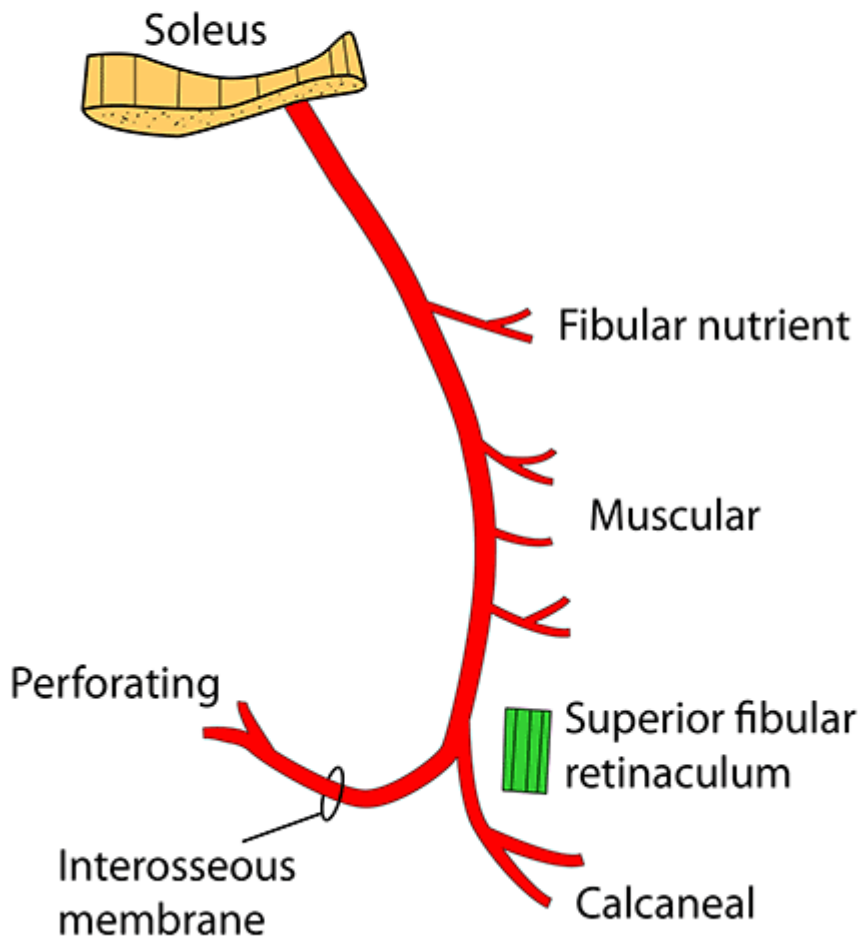
Forces from the foot are transmitted to the tibia. In order to share the impact of the force the interosseous membranes have fibres arranged so that the fibula can share the the strain easily and immediately

RIGHT FIBULAR COMPARTMENT



For more details of muscle actions please see section on ankle & foot movements. Also in muscle section of the book - Instant Anatomy, by R H Whitaker & N R Borley. 4th edition. Wiley-Blackwell 2010

RIGHT FIBULAR ARTERY VIEWED FROM BEHIND



From:
<https://mantrakshar.co.in/> - Kshtrgyn

Permanent link:
<https://mantrakshar.co.in/doku.php/en/bone/fibula>

Last update: 2022/04/01 03:24

